

iPano - workflow



The 'magic' of panoramic images on an iOS device.

Step by Step

1. Render
2. Split
3. Import
4. Process
5. Transfer

Render

- Render image with Autodesk 360 (iCloud)
 - render as square image (2000 x 2000 pixels)
- option #1 - render directly as panorama.
- option #2 - re-render fix camera image as panorama (right-click & select re-render as panorama)



Split

- Download rendering from “cloud”.
- Open with Photoshop
- Split-out 6 separate image files
 - Add descriptive suffix to each file name.
 - image_u.jpg (up)
 - image_d.jpg (down)
 - image_f.jpg (front)
 - image_b.jpg (back)
 - image_l.jpg (left)
 - image_r.jpg (right)



_r

_l

_u

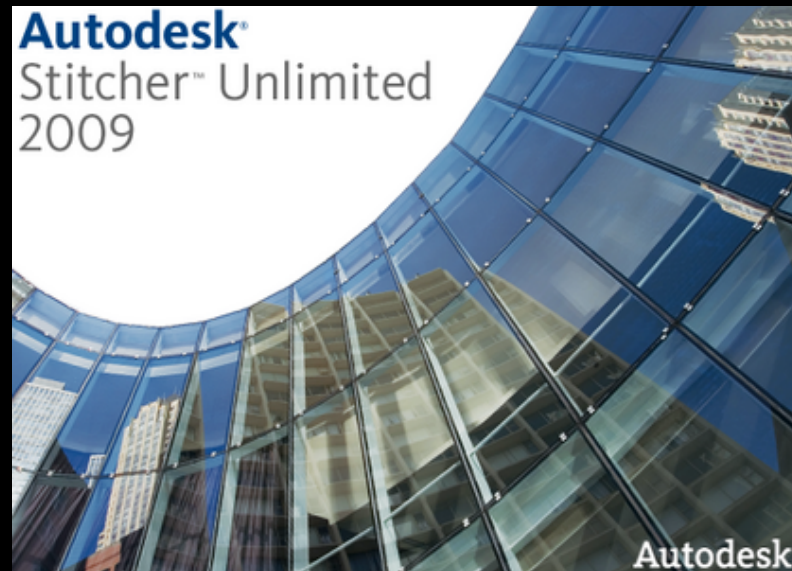
_d

_b

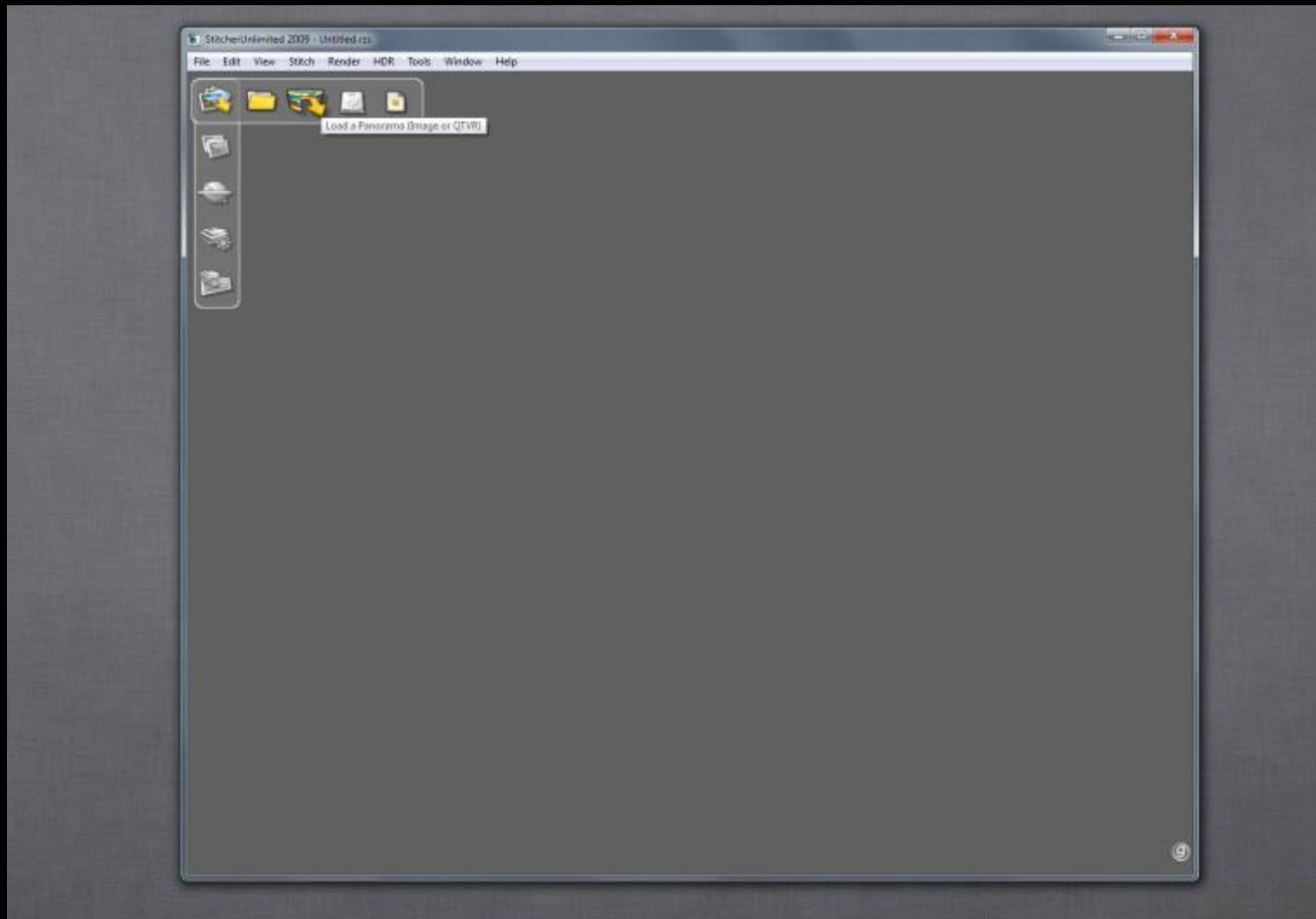
_f

Import

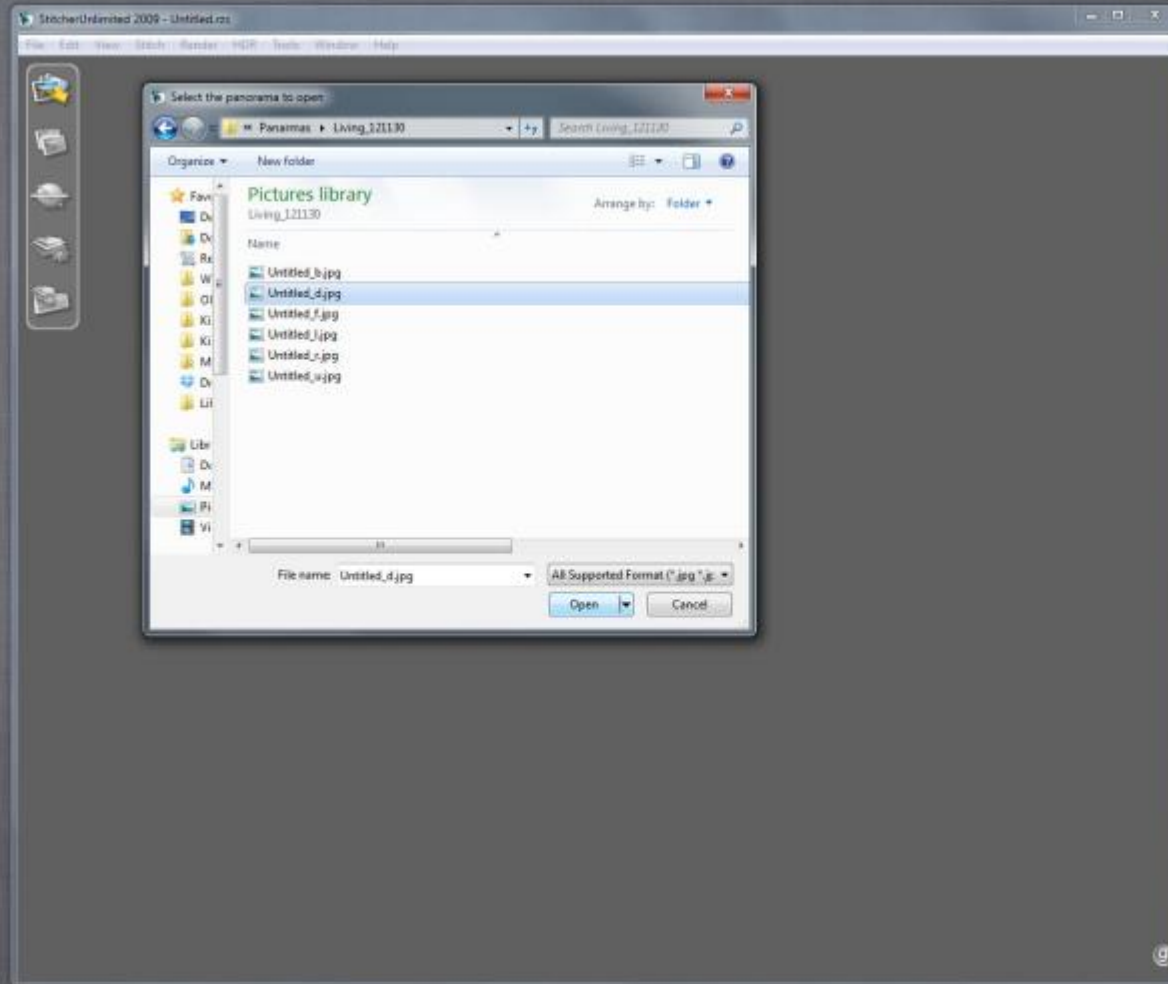
- Autodesk Stitcher Unlimited
 - ~ \$350 single license
 - Open Panorama
 - Select any one of the (6) images



Import



Import



Process

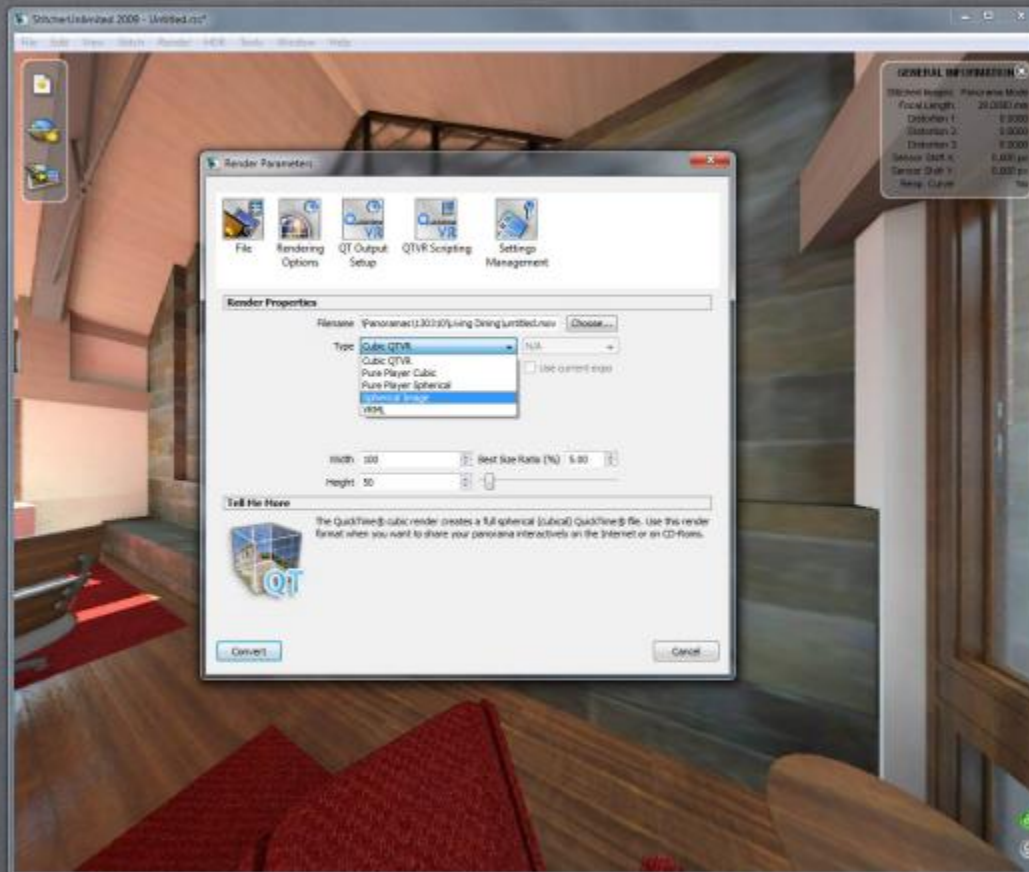
- Within Stitcher Unlimited - Render as Spherical image



Process



Process



Process

- Optimize “Spherical” image to reduce file size.
 - A 8000 x 4000 pixel image should be > 2MB.



Living Dining.jpg
JPG File

Date taken: 3/21/2013 9:13 AM
Tags: Add a tag
Rating:
Dimensions: 8000 x 4000
Size: 1.64 MB
Title: Add a title
Authors: Add an author
Comments: Add comments
Camera maker: Add text
Camera model: Add a name

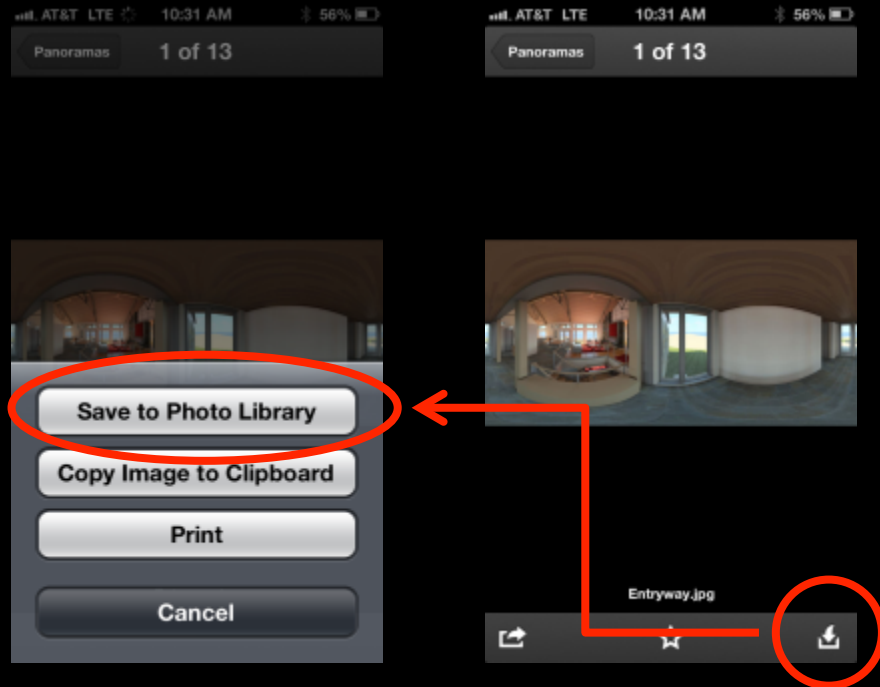
The screenshot shows a file upload interface for a spherical image. The file is named 'Living Dining.jpg' and is a 'JPG File'. The metadata displayed includes the date taken (3/21/2013 9:13 AM), tags (Add a tag), a rating system (5 stars), dimensions (8000 x 4000), size (1.64 MB), title (Add a title), authors (Add an author), comments (Add comments), camera maker (Add text), and camera model (Add a name). A red circle highlights the dimensions and size information.

Transfer

- Add to Dropbox from your PC
- (on iOS device)
 - Open dropbox on iOS device
 - Export from dropbox to “Camera Roll”
 - Open iPano
 - Import from “Camera Roll”
 - Save to bookmarks – for future access without importing again.
 - Edit bookmarks – add description and set default Startup image

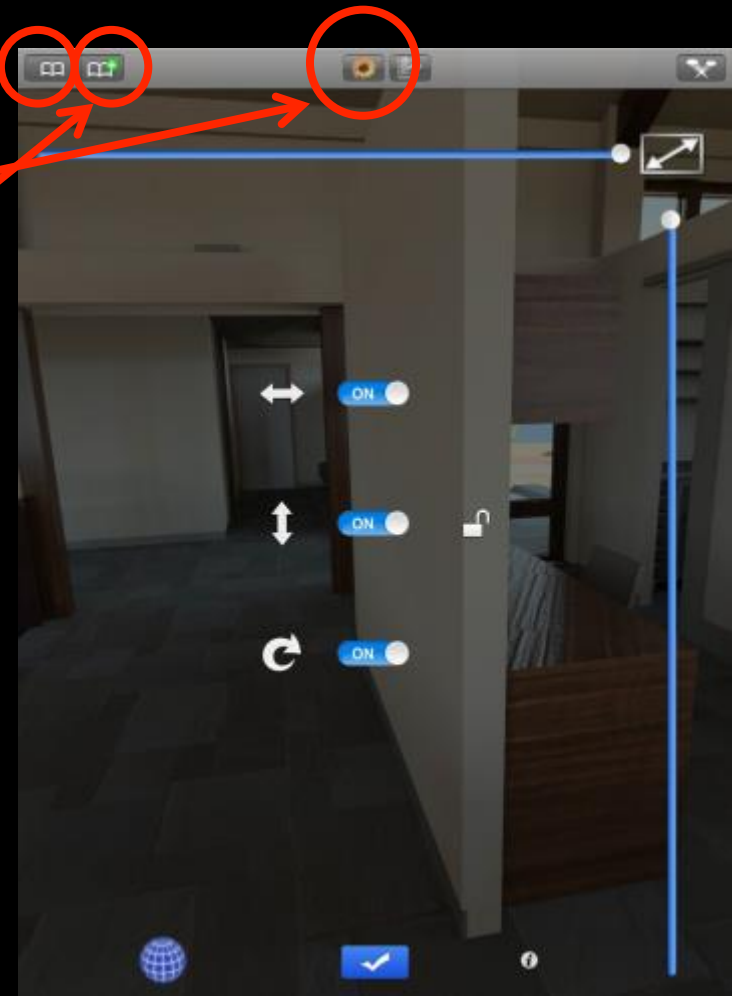
Transfer

Export from dropbox to “Camera Roll”.



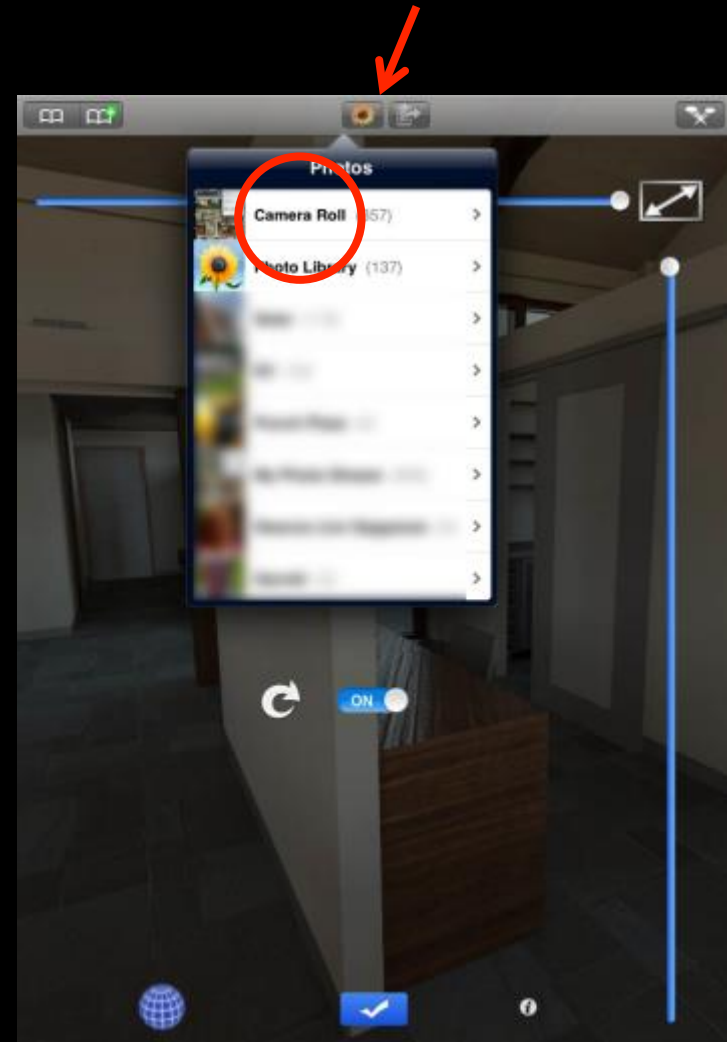
Transfer

1. Import "Spherical" rendering from Camera Roll
2. Add to bookmarks – saves panrama to device
3. Edit bookmarks (catalog)



Transfer

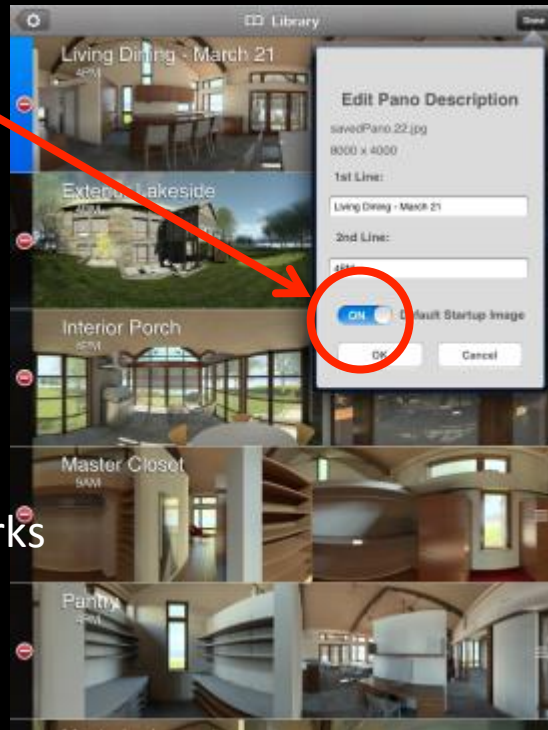
1. Import "Spherical" rendering from Camera Roll



Transfer

Enables image at Startup

3. Edit bookmarks (catalog)



Magic